

# FORTRESS ROCK SOLID WALL REINFORCEMENT ■ ■ ■

## *Carbon Fiber / Kevlar Grid Straps*

Fortress Carbon Fiber/Kevlar Grid Straps provide the necessary tensile strength to a foundation hampered by bowing or significant cracking as a result of settling or movement. Fortress Grid Straps may be used on both block and poured foundations, stopping any further movement without outside excavations, or the use of steel I-beams or tie backs.

With the addition of Fortress Grid Straps, the strength of the foundation increases by more than three times. Fortress Grid Straps conform to the wall and effectively bonds to the surface with the use of epoxy. This allows limitless applications towards any additional repairs, retrofits or seismic upgrades.

### Signs of Settlement/Movement Against the Foundation:

- Diagonal cracks in interior wall finishes at the corners of doors and windows.
- Cracks at the intersection of walls and ceilings, and at the intersection of wall surfaces.
- Doors that bind or do not open or close properly.
- Windows bind or do not open or close properly.
- Un-level floors.
- Cracks in exterior brick, concrete or masonry.
- Cracks in the concrete perimeter beam.
- Separations of wood trim at the exterior corners of your home.

Fortress Grid Straps will not stretch, creep or bend, nor will they rust or deteriorate. With no obstructions, the homeowner may opt to paint over the same day. Foundation repairs using Fortress Grid Straps are permanent and guaranteed for the life of the home when installed by a certified installer.

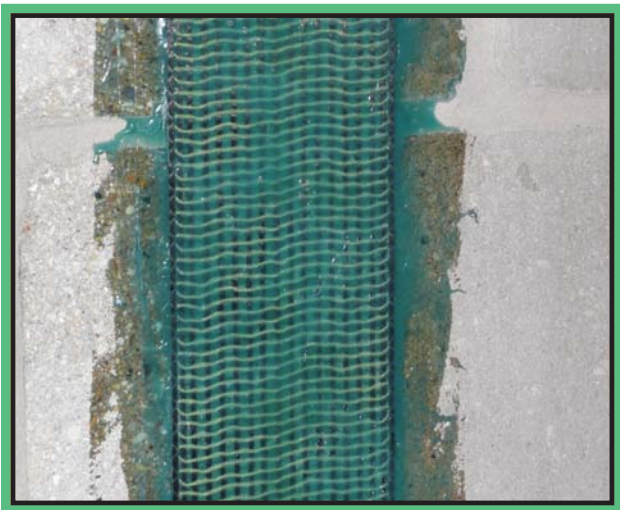


By becoming a certified installer, a contractor's installations are backed by the Fortress Stabilization Systems' lifetime warranty. A contractor may become certified by participating in an online webinar. Contact Emecole for additional information on webinar scheduling or to register.

### Fortress Carbon Fiber/Kevlar Straps Advantages:

- Cost effective
- Non-obtrusive - lays flat to substrate
- No destructive attachments made to the floor or ceiling
- The encapsulation in epoxy ensures that the grid is anchored in place
- Able to conform to bowed walls
- Can be painted for a smooth, clean look
- Quick labor saving installation
- Vacuum clamping system ensures regulated void-free bond every time

Carbon fiber has proved to be a superior alternative to steel for such reinforcement projects because it is stronger and non-corrosive. Carbon fiber is strong, durable and easy to install - most installations are completed in one day. The Fortress Grid Strap has revolutionized the foundation reinforcement industry with quality, strength and a level of standard that is second to none.



For more information -  
Scan the QR Code with your  
smart phone to visit our website

[www.emecole.com](http://www.emecole.com)



## EMECOLE, INC.

50 E. Montrose Dr., Romeoville, IL 60446

phone: 800-844-2713 ● fax: 815-372-3893